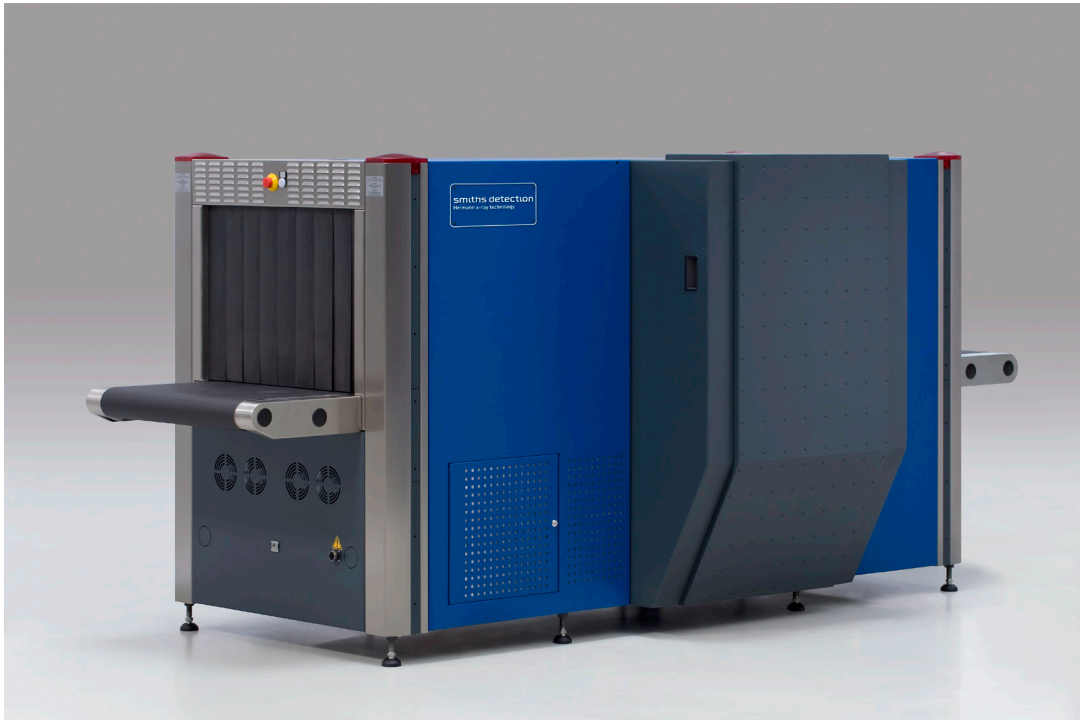


# HI-SCAN™ 7555aTiX

HEIMANN X-RAY TECHNOLOGY

EU standard 2 approved Explosives Detection System



## Feature Highlights

- EU standard 2 approved Explosives Detection System for Hold Baggage Screening
- EU standard 2 approved type C liquid Explosives Detection System (LEDS) for carry-on baggage
- Automatic detection of explosives in carry-on baggage
- Analysis of  $Z_{eff}$  and density using independent views
- Universally usable for carry-on baggage and air cargo packages
- Maximum baggage throughput / real-time evaluation
- Break bulk optimized max. conveyor load of 250 kg (550 lbs)
- Proven, ergonomic operating concept is retained

HI-SCAN 7555aTiX is the first system to allow explosives detection at security checkpoints.

HI-SCAN 7555aTiX uses several, independent multi-energy generators, each of which is connected to its own sophisticated and state-of-the-art X-ray sensor technology.

While the detection performance of the HI-SCAN 7555aTiX is far superior to that of other automatic systems, the rate of false alarms has been considerably reduced through the use of optimized algorithms.

Using advanced computer technologies, even complex analyses will be carried out in real-time without hampering usual checkpoint measures.

The operating concept of the proven HI-SCAN series has been retained which guarantees an optimum passenger throughput at check-points.

The two detailed views (Dual View) available to carry out manual analysis support the quick and reliable evaluation process.

**HI-SCAN 7555aTiX - increased security by innovative technology.**

Approved as LEDS according to EU  
Standard 2 Type C and  
EU EDS Standard 2

# Technical Data **HI-SCAN 7555aTiX**

## General Specifications

Tunnel dimensions	755 (W) x 555 (H) [mm] • 29.7" (W) x 21.9" (H)
Max. object size	750 (W) x 550 (H) [mm] • 29.5" (W) x 21.7" (H)
Conveyor height <sup>1)</sup>	approx. 800 mm [31.5"]
Conveyor speed with 50 Hz / 60 Hz mains frequency	0.2 [m/s]
Max. conveyor load even distributed over the whole conveyor <sup>5)</sup>	250 kg (550 lbs)
Resolution (wire detectability) <sup>2)</sup>	standard: 40 AWG (0.08 mm Cu) • typical: 41 AWG (0.07 mm Cu)
Penetration (steel) <sup>2)</sup>	standard: 35 mm • typical: 37 mm
External dose rate	≤ 2 µSv (0,2 mrem)
Film safety	guaranteed up to ISO 1600 (33 DIN) with a maximum of 5 inspections
Operating cycle	100 %, no warm-up procedure required

## X-ray Generator

X-ray generators	4
Anode voltage • cooling	160 kV cp • hermetically sealed oil bath
Beam direction	from different directions, horizontal and vertical

## Image Generating System

X-ray converter	MultiView detector system with large-scale integrated, monolithic amplifier
Grey levels stored	4096
Image presentation	B/W, color, HI-MAT <sup>Plus</sup>
Digital video memory	1280 x 1024 / 24 bit
Image evaluation functions	VARI-MAT, O <sup>2</sup> , OS, HIGH, LOW, NEG, HI-SPOT, SEN, XPlore, Opti-Zoom, HDA, stepless, electronic Zoom: enlargement: up to 64 times
Monitor	Flat Panel LCD Monitors (2)

## Additional Features

Functions	fading-in of date/time, luggage counter, user id-number, luggage marking system (acoustic), display of operating mode, REVIEW-feature (to recall previously visible image areas), zoom overview, free programmable keys, USB 2.0 interface, stepless zoom, IMS (Image Store System - stores up to 100,000 images)
Options	HI-TIP, Xport

## Installation Data

X-ray leakage	meets all applicable laws and regulations with respect to X-ray emitting devices
CE labelling/directives	in compliance with directives 2004/108/EC, 2006/42/EC, 2006/95/EC developed in accordance with standards IEC, UN, UL, CSA
Sound pressure	< 65 dB(A)
Operating-/storage temperature	0° - 40°C / -20°C - +60°C
Humidity	10% - 90% (not condensing)
Power supply <sup>3)</sup>	standard: 120, 200, 230, 240 VAC +10% / -15% • 50 Hz / 60 Hz ± 3 Hz
Power consumption	max. 2,2 kVA
Protection class system / keyboard	IP 20 / IP 43
Dimensions • weight <sup>4)</sup>	3450 (L) x 1445 (W) x 1535 (H) [mm] • approx. 1780 kg 135.8" (L) x 56.9" (W) x 60.4" (H) • approx. 3924 lbs
Mechanical construction	steel construction with steel panels, mounted on roller castors standard color(s): RAL 7016 (dark grey) / B11-W1 (blue)

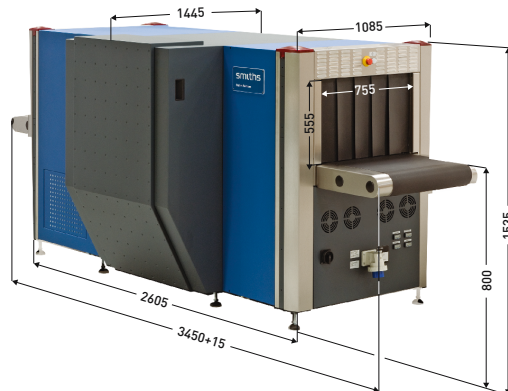
<sup>1)</sup> approx. values (adjustable)

<sup>2)</sup> proprietary quality management test piece: steel step wedge, CU wires, belt speed 0.2 m/s

<sup>3)</sup> different values optional

<sup>4)</sup> without control desk, keyboard, monitor(s) etc.

<sup>5)</sup> measured at ambient temperature of 20°C and nominal voltage



For product information, sales or service, please go to [www.smithsdetection.com/locations](http://www.smithsdetection.com/locations)

Smiths Heimann GmbH, Im Herzen 4, 65205 Wiesbaden, Germany  
Modifications reserved. 95591773 08/12/2015 © Smiths Detection Group Ltd. - In some cases, the figures contain options  
HI-SCAN is a trademark of Smiths Detection Group Ltd.

smiths detection